





FX – light drills with pneumatic distribution system and transport of grain, mounted on the cultivator



Electrovalves mounted on sowing lines make easier to place process paths.



Sowing apparatus can dose seed thick or fine grain in the range 1,8 - 400 kg/ha



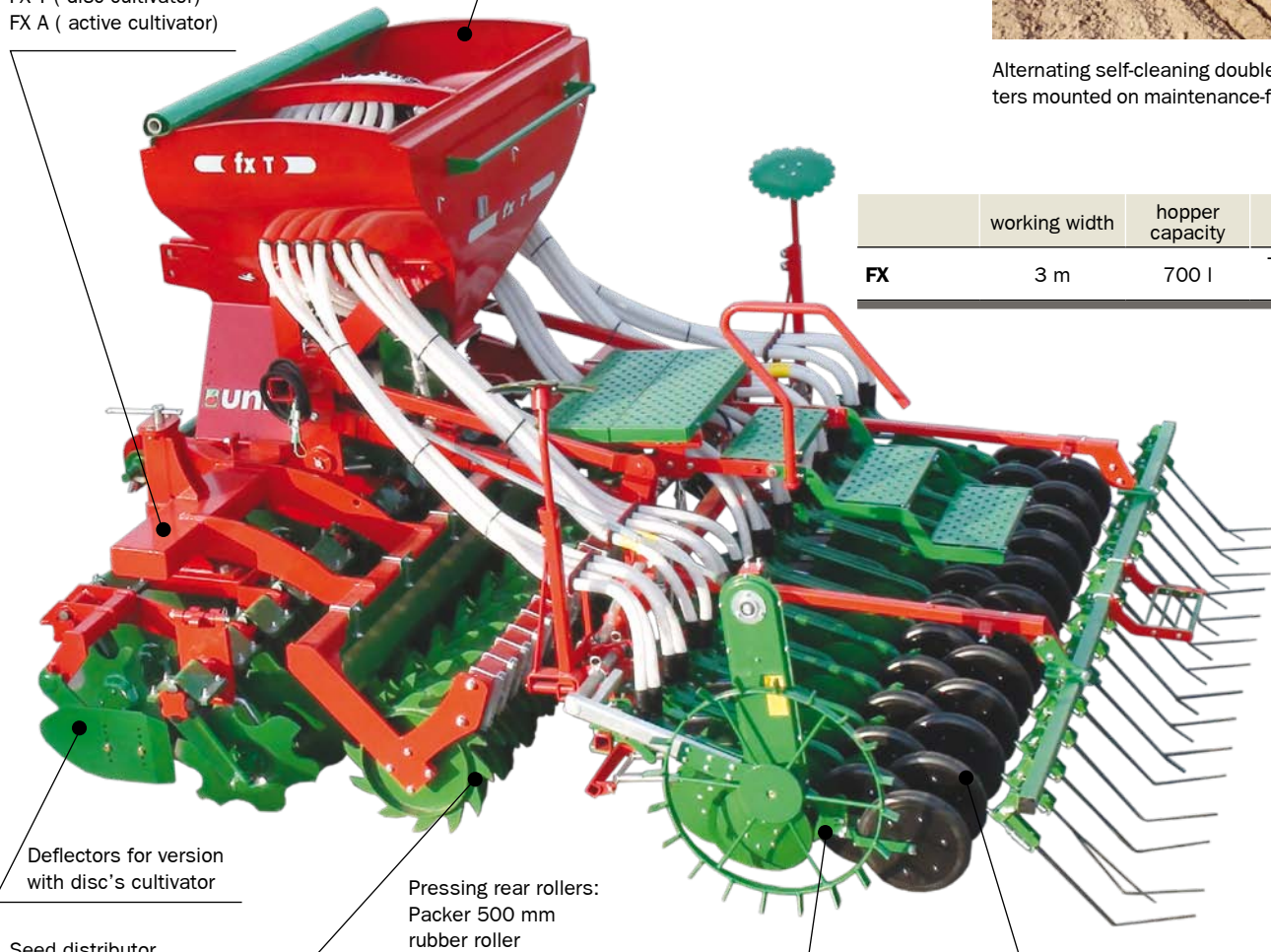
Light hoe coulters



Alternating self-cleaning double – disc coulters mounted on maintenance-free bearings

Cultivators:
 FX (tine cultivator)
 FX T (disc cultivator)
 FX A (active cultivator)

A funnel-like shape of the tank with a capacity of 700 dm³ for easy loading from big bags



	working width	hopper capacity	cultivator
FX	3 m	700 l	Tine, discs or active

Deflectors for version with disc's cultivator

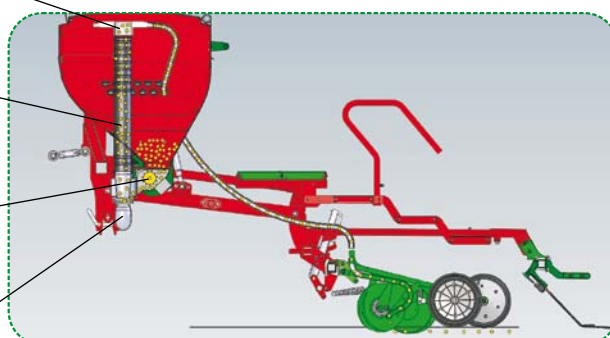
Pressing rear rollers:
 Packer 500 mm
 rubber roller

Seed distributor

Corrugated tube

Sowing apparatus

Ventilator



25 kg – is maximum pressure per coulter of diameter 330 mm

Pressing and copying wheel of diameter 330 mm press the grains into the soil, providing faster and more equal germination

One sowing unit meters seed dose, which is mixed with air flow and transported through a special corrugated tube to the distributor installed at the top of loading hopper and then, the seeds is transported to the coulters by hoses

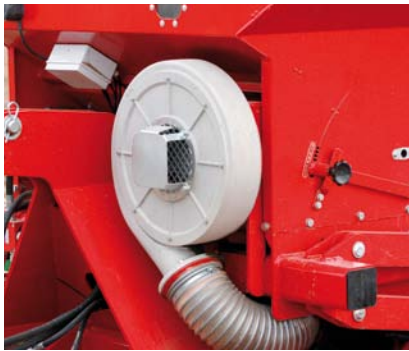


FS – drill with pneumatic seed transport mounted on cultivator

	Arbeitsbreite	Behälterkapazität	Aggregate
FS 2000	3 m	2000 l	Scheibenaggregat



Tire roller with a diameter of 1100 mm = stabile work under all conditions



With the pressure generated by the ventilator powered by a hydraulic motor grain is strong force pocketed literally in the soil

- Cultivators:
 FS (tine cultivator)
 FS T (disc cultivator)
 FS A (active cultivator)

- Pressing rear rollers:
 Packer 500 mm
 rubber roller
 tire roller 670 mm (System Drive)



Double, alternating, self-cleaning disc coulters. (first disc cutting, second disc cleaning)

Pressing and copying unit ensures appropriate seed to soil contact and maintains the desired seeding depth in all conditions.

The system of independent hydraulic pump



Hydraulic pump with the capacity 30 l/ min.
Powered by tractor's PTO shaft



Oil tank with a capacity of 30 liters



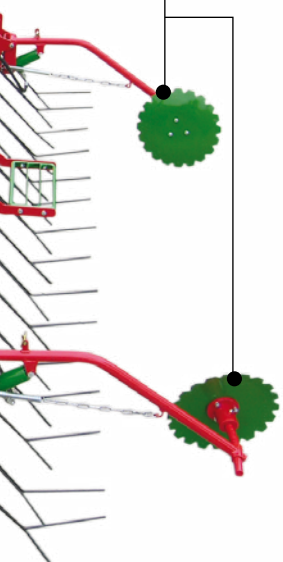
The oil cooler



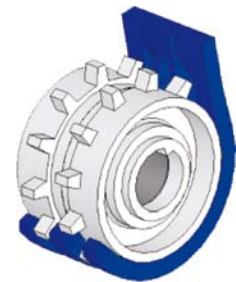
FS may be present in semi-mounted version (drive system) or as a machine mounted

Pre-emergence process
paths operated hydraulically

	working width	hopper capacity	cultivator
FS 1000	3/4 m	1000 l	Tine, discs or active



Heavy disc coupler in diameter 300 mm with the copying wheel.
The pressure unit 40 kg / couler – FS 2000, FS 1000 T drive (option).



Seeds are sown with two piece inter-
grated sowing apparatus. For sowing
fine seeds there are special adapters.

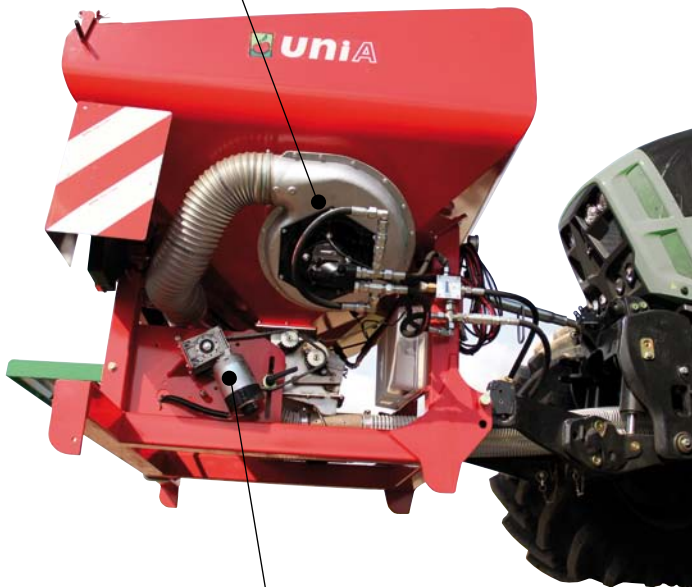


FV – pneumatic Drills to aggregate with the team coulter

	working width	hopper capacity	weight	maximum seeddose
FV 1600	3-6 m	1600 l	380 kg	1200 kg/h



Ventilator to transport grain to the coulter powered by a hydraulic motor.



Seed dispensing apparatus made of stainless steel is powered an electric motor.



Seed beam with a width of 6 m coulter, light (pressure 25 kg / coulter)



FV 1600 mounted on the 3-pint linkage of the tractor (600 dm³ possible raiser)

ETA – pneumatic drills dispenser



Dispenser drill ETA – you can sow small seeds of plants aftercrop and grasses



ETA 200 with electric drive. Working width 1-6 m



ETA 500 with hydraulic drive. Working width can be 1-7 meters (8 outputs), 1-12 m (16 outputs)



Seeds hit the diffusion plate, which increases the width of the sowing



Computer for seeder Eta

	working width	hopper capacity	weight	electrical specifications
ETA 200		200 l	60/83 kg	12 V / 25 A
ETA 300	1-12 m	300 l	70/93 kg	
ETA 500		500 l	103/126 kg	



AMBER – Heavy drills with mechanical system of sowing seeds

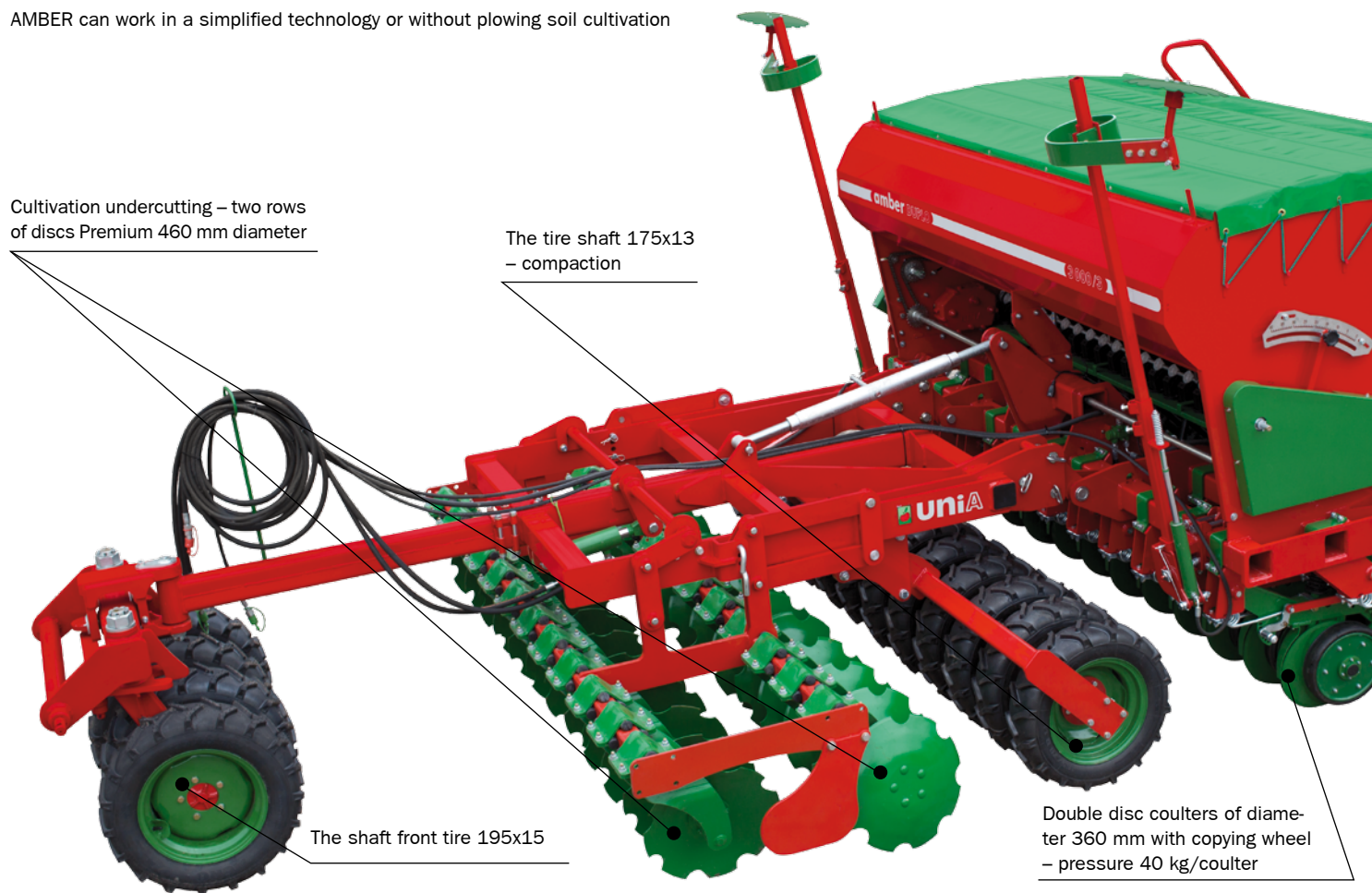
	working width	hopper capacity
AMBER/ AMBER duplo	3/4 m	900/1200/3000 l



AMBER can work in a simplified technology or without plowing soil cultivation

Cultivation undercutting – two rows of discs Premium 460 mm diameter

The tire shaft 175x13 – compaction



The shaft front tire 195x15

Double disc coulters of diameter 360 mm with copying wheel – pressure 40 kg/coulter



AMBER DUPLO in addition to the sowing apparatus is equipped with apparatus sowing fertilizer and fertilizer-divided seeding hopper



Disc couler for fertilizers



The single disc couler on rubber shock absorber - Pressure of 100 kg, recommended for sowing in technology minimum soil cultivation



Version 900/3 to choose from: mounted or semi-mounted (System Drive)



The double disc couler with copying wheel - pressure 40 kg / couler, provides a copy area. Recommended for sowing in a traditional soil cultivation



Rear tire shaft 195x15 compacting after sowing, transport.

Equalization firmer



AMBER 1200/4 semi-mounted version (DRIVE SYSTEM) - In addition may include DUPLO SYSTEM - to simultaneous sowing seed and fertilizer



Amber 900/3 semi-mounted version (System Drive) with front hydraulic board



Cultivating units

Types of cultivators



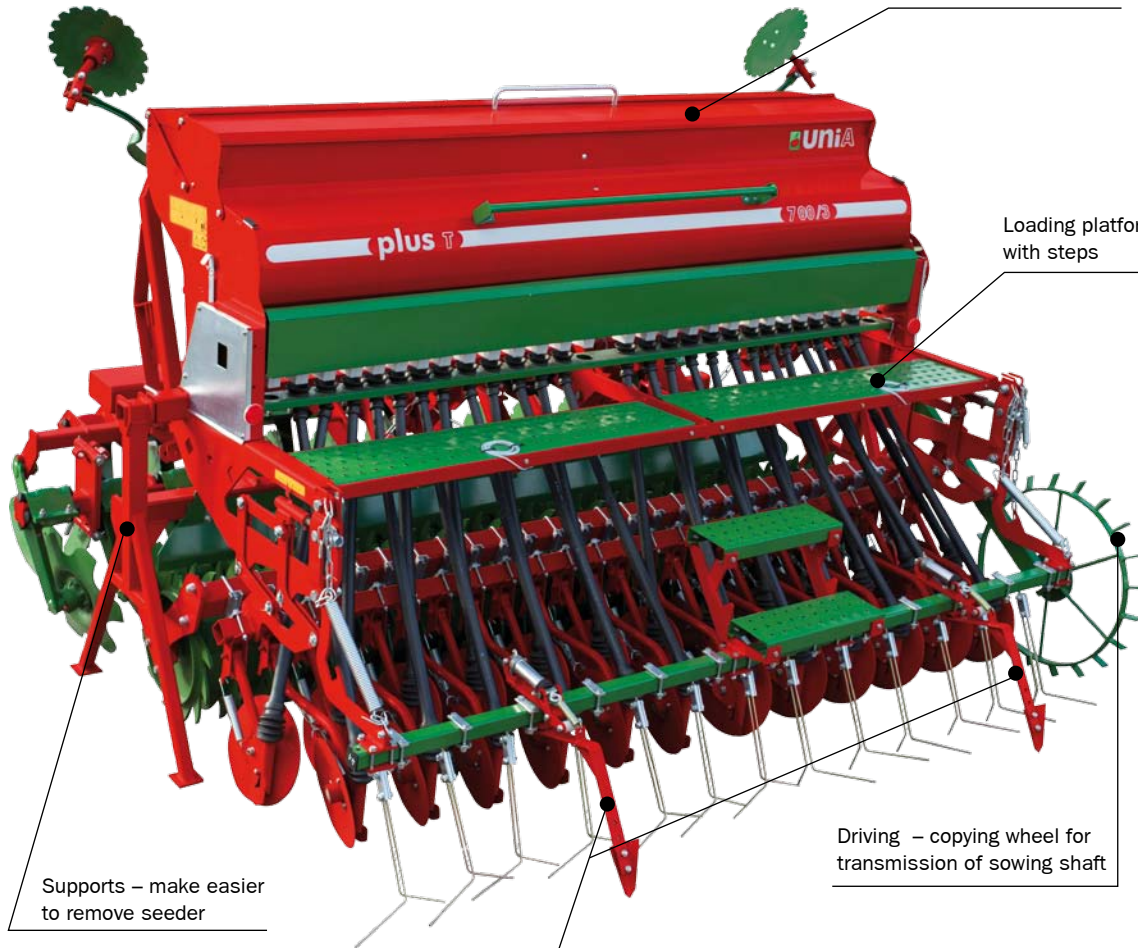
Compact built-on unit plus 700



Double disc coulters alternating self-cleaning with pressing-copying wheels



Hoe coulters



Hopper of capacity 400 or 700 dm³

	working width
PLUS	3 m

Loading platform with steps

Supports – make easier to remove seeder

Driving – copying wheel for transmission of sowing shaft



Two piece integrated sowing apparatus (divided wheels to fine and coarse seed)

Pneumatically controlled pre-emergences paths





Single disc coulters



Light Seedbed combination, disc

hopper capacity	Aggregate
400/700 l	Tine, discs or active



	working width	hopper capacity	Aggregate
ECO	3 m	350/500/550 l	Tine, discs or active

Such method of transport of seeder lifted over the cultivator relieves tractor's hydraulic system



Mechanical seeder can be hung on hydraulic couplers of various cultivators.





Box drills with mechanical seeding system



Line F – light 3-mteres seeder with capacity 350 or 500 dm³

20 kg/ coulter is maximum pressure



25 kg/ coulter is maximum pressure

Linia P – seeders 550 with alternating double disc coulters with copying-pressing unit



P 1100 with semi mounted unit Atlas

25 kg/ coulter is maximum pressure



seeders	working width	loading hopper capacity	coulters
F	3 m	350/500 l	Hoe, disc single or double disc
P	3; 4; 4,5; 6 m	550/780/855/1100 l	Hoe or double disc alternating
P Premium	4 m	1000 l	Double disc
P Drive	4 m	1500 l	Double disc



Divided hopper – simultaneous seeding grain and fertilizer



Markers passing hydraulically controlled

Firmer Key Sequence to an individual spring down force



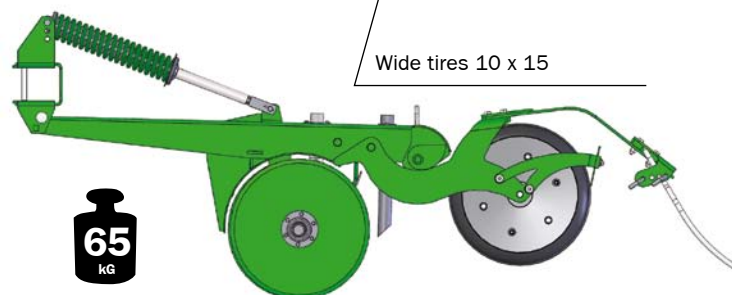
P 1500 drive – semi mounted seeder with big loading hopper and heavy double disc coulters of diameter 300 mm with copying wheel, pressure 65 kg/ coulters



Wide tires 10 x 15



40 kg/ coulters is maximum pressure



65 kg/ coulters is maximum pressure



DELTA – precision sowing machines with pneumatic seeding system with hoe coulters or disc coulters

Disc coulters for seed



Hoe coulters



Disc coulters



	number of sections
DELTA	4/6/8/12

Discs coulters for fertilizers



Disc coulters

Hoe coulters

Markers passing control by two hydraulic cylinders

The tank of fertilizer distributor single or divided made of painted steel sheet or acid resistant



The grain tank capacity of 26.8 dm³ made of plastic



With interchangeable shields having a different number and size of the holes can be drilled spot almost all the seeds of agricultural plants

Massive copying wheel with a diameter of 480 mm provides good stability of section while working





